

omniCHROMA *Flow*

One-Shade Flowable Composite

Every shade. One choice.



Many dentists have experienced and appreciate the benefits of saving time and money with the world's first one-shade universal composite OMNICHROMA. Now, the same benefits are available in a flowable consistency to address more restorative needs.

Utilizing Smart Chromatic Technology and uniformly sized supra-nano spherical fillers, **OMNICHROMA FLOW** is the world's first one-shade flowable composite to esthetically match every color of tooth from A1 to D4 with a single shade of composite. Its high strength and wear resistance make it suitable for a wide range of indications beyond cavity lining and minor restorations, giving clinicians the freedom of choice for nearly all direct restorations.

The benefits of a one-shade composite, now in the versatile handling you need.

Benefits to Clinicians

- Increased efficiency – saving time and money
- Simplified inventory management
- Reduction of composite waste
- Never run low on composite shades ever again

Outstanding Features

- Unprecedented shade matching
- High polishability
- High stain resistance
- Flexural and compressive strength suitable for a wide range of indications
- Low wear and abrasion
- Low polymerization shrinkage

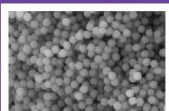
Indications

- All cases of direct anterior and posterior restorations
- Cavity base or liner
- Repair of porcelain/composite

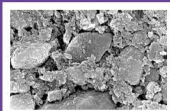


SMART CHROMATIC TECHNOLOGY

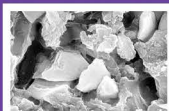
OMNICHROMA FLOW's structural color mechanism is made possible by the filler particles within the composite. The 260 nm spherical fillers are of the exact size and shape needed to produce the shade matching effect, allowing the composite to blend in invisibly with surrounding tooth structure.



OMNICHROMA Flow



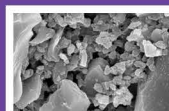
Filtek Supreme Ultra Flowable



Esthet-X Flow



Tetric EvoFlow



Venus Diamond Flow

*SEM Image of the Filler Used in Resin Composite (20,000x Magnification)

There are 2 Color Producing Phenomena

Color is nothing more than wavelengths of light that reach our eyes.

White light contains all wavelengths of color - from violet, which is the shortest, to red, the longest, these wavelengths make up the visible spectrum of color that we can see.



Chemical Color

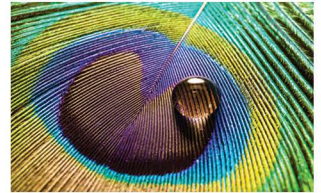
The most common form of color visible to us and happens when molecules of a material reflect particular wavelengths.

Typical composites today rely on the chemical color of added dyes and pigments.

Structural Color

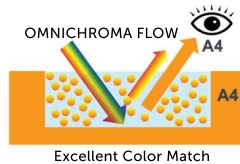
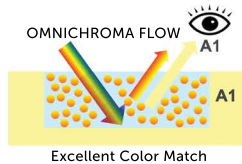
A phenomenon in which the structure of a material amplifies or weakens different wavelengths to create a certain color.

OMNICHROMA composites use structural color to create a shade match to surrounding tooth structure.



OMNICHROMA products are the only composites to utilize SMART CHROMATIC TECHNOLOGY, which...

- Leverages structural color as the main color mechanism
- Does not require added dyes or pigments
- Generates color by utilizing fillers themselves to reflect shade of surrounding tooth



The composite appears opaque-white before curing, allowing for higher visibility and easier placement. Once cured, it generates the perfect match to the surrounding tooth, and is capable of producing this effect even when the patient's tooth color changes, e. g. after bleaching.

OMNICHROMA FLOW in artificial teeth (Before and after light-curing)

Before light-curing



After light-curing



Clinical Guide for Most Cases

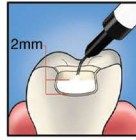
POSTERIOR



Preparation: Add chamfers to help eliminate margin visibility and aid shade matching.



Apply bonding agent.



Fill with OMNICHROMA FLOW.

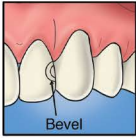


Light-cure. (Curing time varies depending on intensity of the curing light.)

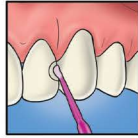


Finish and polish.

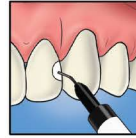
ANTERIOR



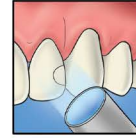
Preparation: Add bevels to help eliminate margin visibility and aid shade matching.



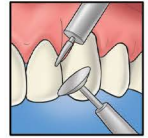
Apply bonding agent.



Fill with OMNICHROMA FLOW.



Light-cure. (Curing time varies depending on intensity of the curing light.)



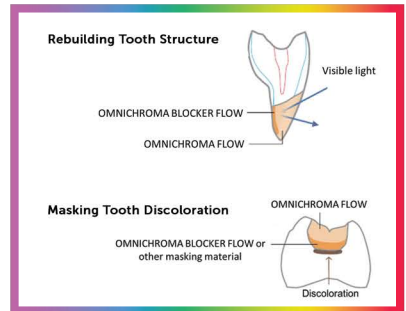
Finish and polish.

OMNICHROMA BLOCKER FLOW

OMNICHROMA BLOCKER FLOW is a supplementary material to be used in conjunction with OMNICHROMA FLOW or OMNICHROMA in certain cases to prevent shade matching interference.

Indications

- To improve shade adaptation and preventing OMNICHROMA FLOW from picking up the darkness of the oral cavity
- To mask staining or discolored imperfections
- To reconstruct a highly opaque tooth

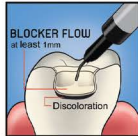


Clinical Guide for Cases Requiring BLOCKER FLOW

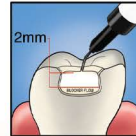
POSTERIOR



Prepare and apply bonding. Add a bevel to help eliminate margin visibility and aid in shade matching.



Apply BLOCKER FLOW as a base layer to mask discoloration. Thickness can vary, but 1mm is illustrated as a guide. Light-cure.



Apply OMNICHROMA FLOW in 2mm increments.

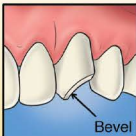


Light-cure. (Curing time varies depending on intensity of the curing light.)

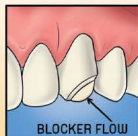


Finish and polish.

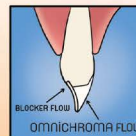
ANTERIOR



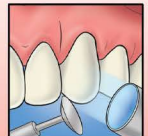
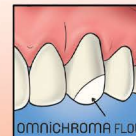
Prepare and apply bonding. Add chamfers or bevels to help eliminate margins and aid shade matching.



Apply BLOCKER FLOW as a lingual layer. Thickness can vary, but 0.5mm is illustrated as a guide. Light-cure.



Apply OMNICHROMA FLOW as a secondary layer.

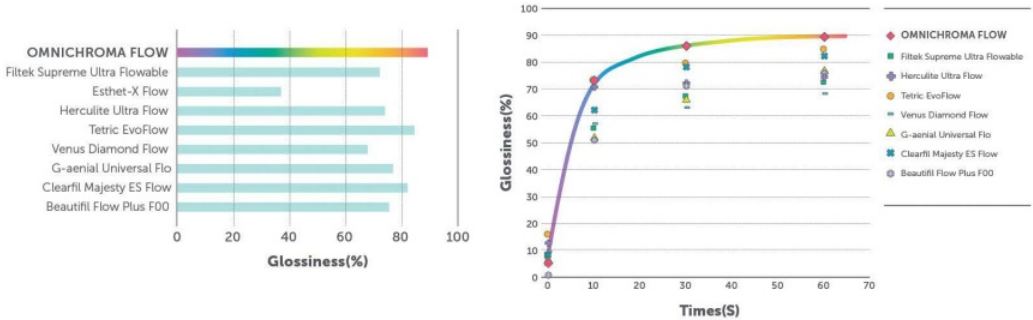


Light-cure, finish, and polish.

High Polishability

OMNICHROMA FLOW produces extremely high glossiness compared to other flowable composites.

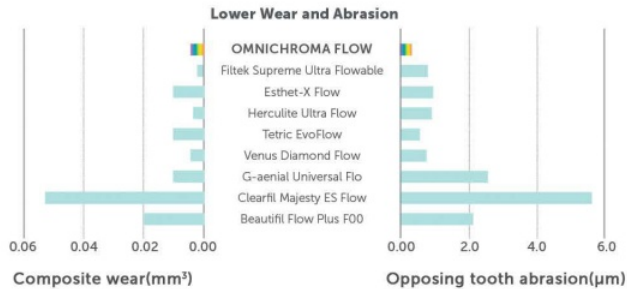
Polishing test using Sof-Lex™ Superfine for 60 seconds



After just 30 seconds, OMNICHROMA FLOW reaches higher levels of gloss than other products can achieve in 60 seconds.

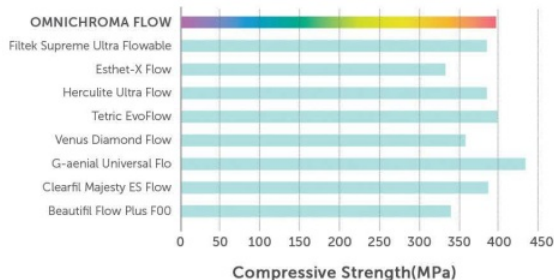
Lower Wear and Abrasion

OMNICHROMA FLOW exhibits an excellent balance between volume loss of the composite resin and wear of the human tooth and is less likely to abrade opposing teeth while not easily becoming abraded itself.



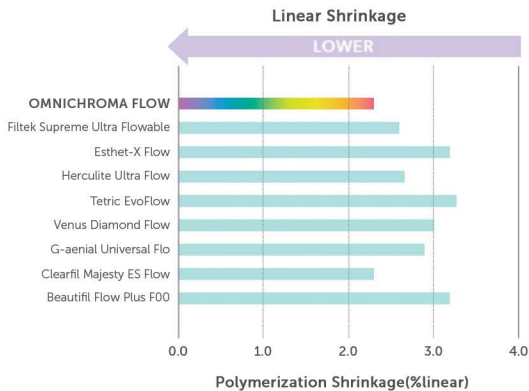
Flexural and Compressive Strength

The flexural strength (111 MPa) of OMNICHROMA FLOW represents a typical level while its compressive strength (397 MPa) is greater than most flowable composites - ensuring dependable results.



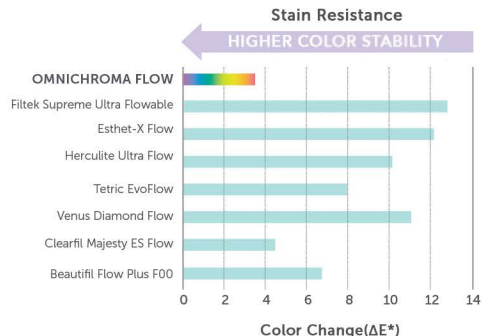
Low Shrinkage

Compared to other commercially available flowable resin composites, **OMNICHROMA FLOW** exhibits low polymerization shrinkage.

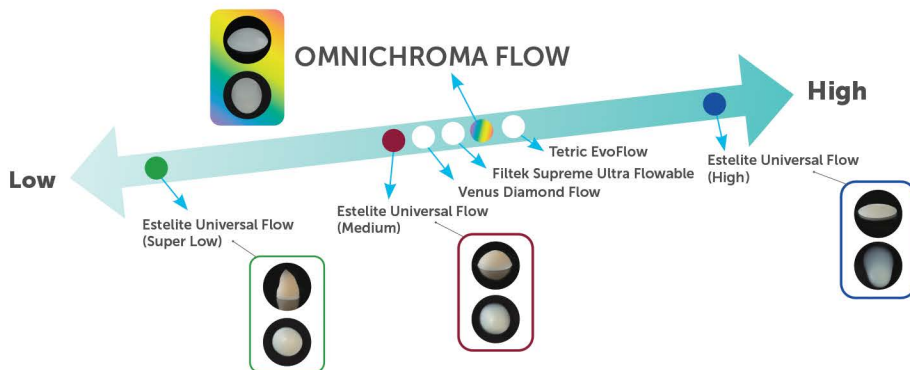


Stain Resistance

The extent of staining **OMNICHROMA FLOW** displayed after being immersed into a coffee solution was the lowest among commercially available flowable resin composites, indicating **OMNICHROMA FLOW** will resist staining for the life of the restoration.



Viscosity



Product Line

10220	OMNICHROMA FLOW - Syringe 3g (1.8mL) - Tokuyama Dispensing Tip (x10)	
10222	OMNICHROMA BLOCKER FLOW - Syringe 3g (1.8mL) - Tokuyama Dispensing Tip (x10)	
12740	Tokuyama Dispensing Tip (x50)	