

omniCHROMA *Flow* BULK

One-Shade Bulk Fill Composite

Every Shade. One Choice.



OMNICHROMA Flow BULK is a one-shade bulk fill composite, capable of shade-matching any tooth color from A1 to D4. It is a low viscosity, light-cured material, which can be placed in 3.5mm increments.

Utilizing Smart Chromatic Technology and uniformly sized supra-nano spherical fillers, **OMNICHROMA Flow BULK** generates red-to-yellow color range to shade match esthetically. The color generation, versus reliance on translucency alone to shade match, ensures there is no loss of chroma or drop in value. **OMNICHROMA Flow BULK's** low polymerization shrinkage, compressive strength, high polishability, and cavity adaptation make it suitable for anterior and posterior restorations.

It offers clinicians a new bulk fill restorative option, saving time and money.

Benefits to Clinicians

- Increased efficiency – saving time and money
- Simplified inventory management
- Reduction of unused composite waste
- Never run low on composite shades ever again
- Addresses more restorative needs with OMNICHROMA one-shade composite line

Outstanding Features

- Unprecedented shade matching
- Low polymerization shrinkage
- High compressive and flexural strength
- Excellent cavity adaptation
- High stain resistance
- High polishability

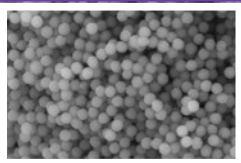
Indications

- All cases of direct anterior and posterior restorations
- Cavity base or liner
- Repair of porcelain/composite
- Blocking out cavity undercuts before fabricating indirect restorations

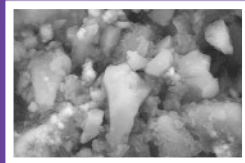


Smart Chromatic Technology

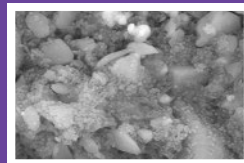
OMNICHROMA Flow BULK's structural color mechanism is made possible by the filler particles within the composite. The 260nm spherical fillers are of the exact size and shape needed to produce the shade-matching effect, allowing the composite to blend in invisibly with surrounding tooth structure.



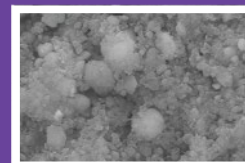
OMNICHROMA Flow BULK



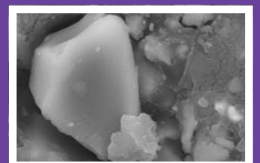
SDR flow+ Bulk Fill Flowable



Sonicfill 3



Filtek Bulk Fill Flowable



Tetric PowerFlow

*SEM Image of the Filler Used in Resin Composite (20,000x Magnification)

Smart Chromatic Technology and Structural Color

Color is nothing more than wavelengths of light that reach our eyes.

White light contains all wavelengths of color - from violet, which is the shortest, to red, the longest, these wavelengths make up the visible spectrum of color that we can see.



Chemical Color

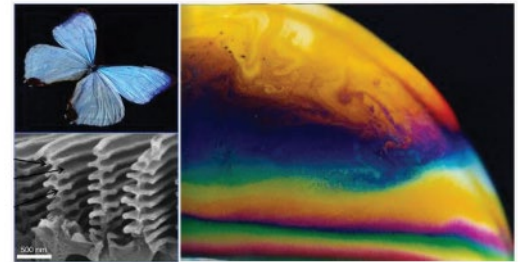
The most common form of color visible to us and happens when molecules of a material reflect particular wavelengths.

Typical composites today rely on the chemical color of added dyes and pigments.

Structural Color

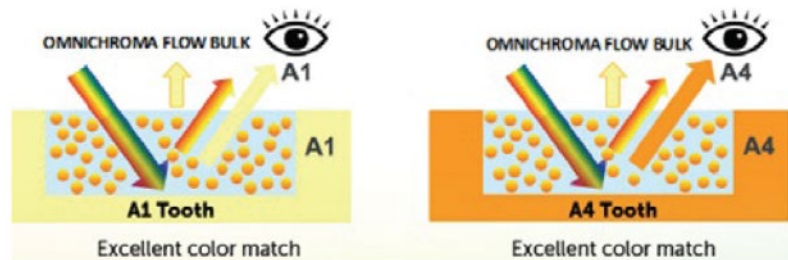
A phenomenon in which the structure of a material amplifies or weakens different wavelengths to create a certain color.

OMNICHROMA composites use structural color to create a shade match to surrounding tooth structure.



OMNICHROMA products are the only composites to utilize *Smart Chromatic Technology*, which...

- Leverages structural color as the main color mechanism
- Does not require added dyes or pigments
- Generates color by utilizing fillers themselves to reflect shade of surrounding tooth



The composite appears opaque-white before curing, allowing for higher visibility and easier placement. Once cured, it generates the perfect match to the surrounding tooth, and is capable of producing this effect even when the patient's tooth color changes, e. g. after bleaching.

OMNICHROMA FLOW BULK in artificial teeth (Before and after light-curing)

Before light-curing

A1 A2 A3 A3.5 A4 B1 B2 B3 B4 C1 C2 C3 C4 D2 D3 D4

After light-curing



Cavity: ϕ 4mm \times 3.5mm depth

Clinical Guide for Most Cases

POSTERIOR



Preparation: Add chamfers to help eliminate margin visibility and aid shade matching.



Apply bonding agent.



Fill with OMNICHROMA Flow BULK.

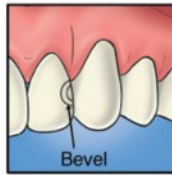


Light-cure. (Curing time varies depending on intensity of the curing light.)

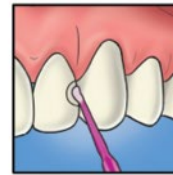


Finish and polish.

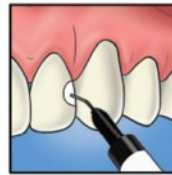
ANTERIOR



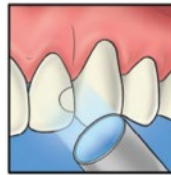
Preparation: Add bevels to help eliminate margin visibility and aid shade matching.



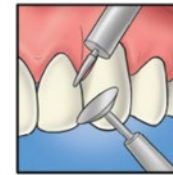
Apply bonding agent.



Fill with OMNICHROMA Flow BULK.



Light-cure. (Curing time varies depending on intensity of the curing light.)



Finish and polish.

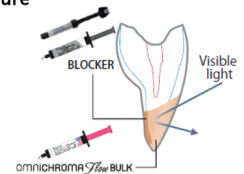
OMNICHROMA BLOCKER Flow

OMNICHROMA BLOCKER Flow is a supplementary material to be used in conjunction with OMNICHROMA Flow BULK, OMNICHROMA Flow or OMNICHROMA in certain cases to prevent shade matching interference.

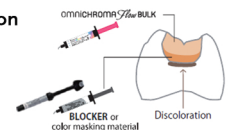
Indications

- To improve shade adaptation and prevent OMNICHROMA Flow BULK from picking up the darkness of the oral cavity
- To mask staining or discolored imperfections
- To reconstruct a highly opaque tooth

Rebuilding Tooth Structure

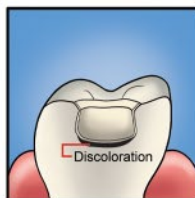


Masking Tooth Discoloration

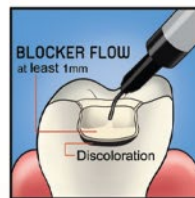


Clinical Guide for Cases Requiring BLOCKER Flow

POSTERIOR



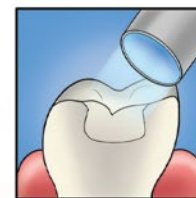
Prepare and apply bonding. Add a bevel to help eliminate margin visibility and aid in shade matching.



Apply BLOCKER FLOW as a base layer to mask discoloration. Thickness can vary, but 1mm is illustrated as a guide. Light-cure.



Apply OMNICHROMA Flow BULK in 3.5mm increments.

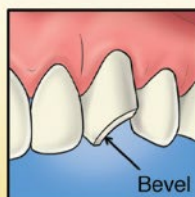


Light-cure. (Curing time varies depending on intensity of the curing light.)

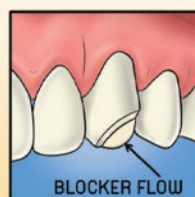


Finish and polish.

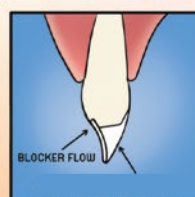
ANTERIOR



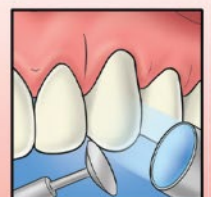
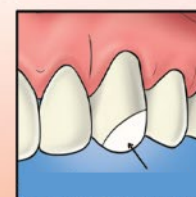
Prepare and apply bonding. Add chamfers or bevels to help eliminate margins and aid shade matching.



Apply BLOCKER FLOW as a lingual layer. Thickness can vary, but 0.5mm is illustrated as a guide. Light-cure.



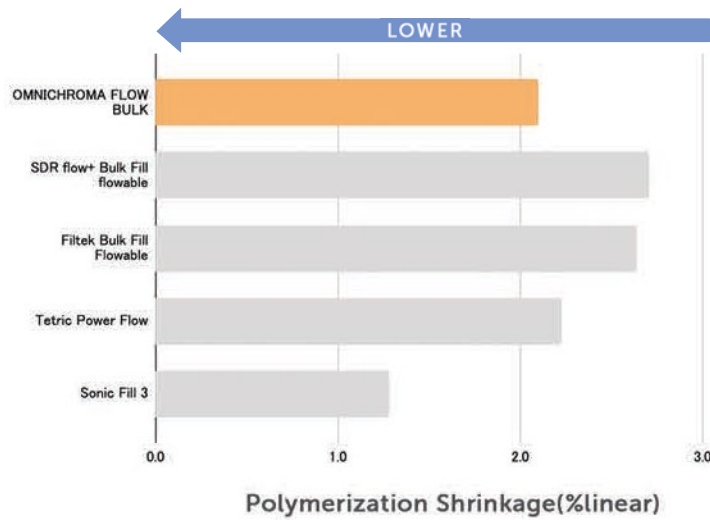
Apply OMNICHROMA Flow BULK as a secondary layer.



Light-cure, finish, and polish.

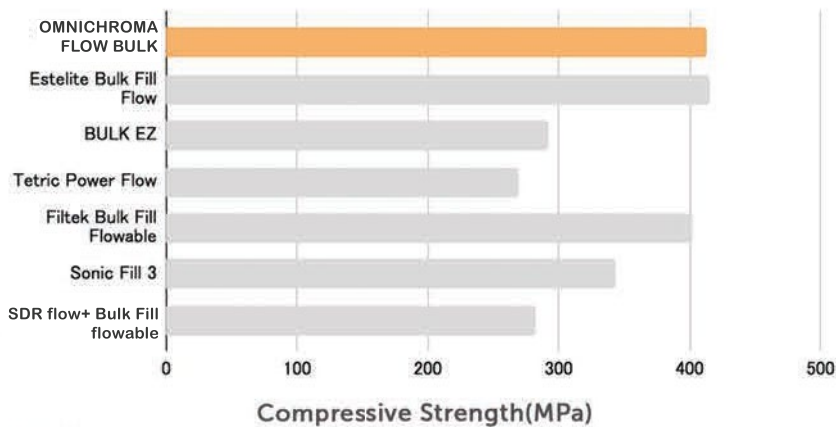
Low Shrinkage

OMNICHROMA Flow BULK exhibits low polymerization shrinkage compared to many other commercially available bulk fill composites.



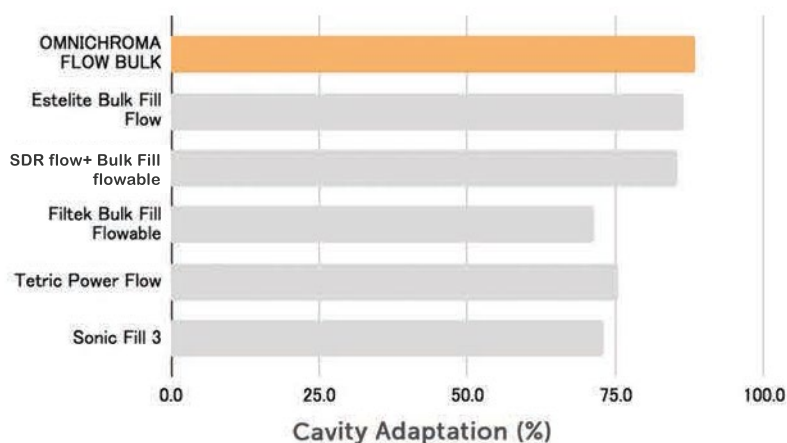
Compressive and Flexural Strength

Compressive strength of OMNICHROMA Flow BULK (414 MPa) is the highest among commercially available bulk fill composites while its flexural strength (120 MPa) represents a typical level, ensuring dependable restorations.



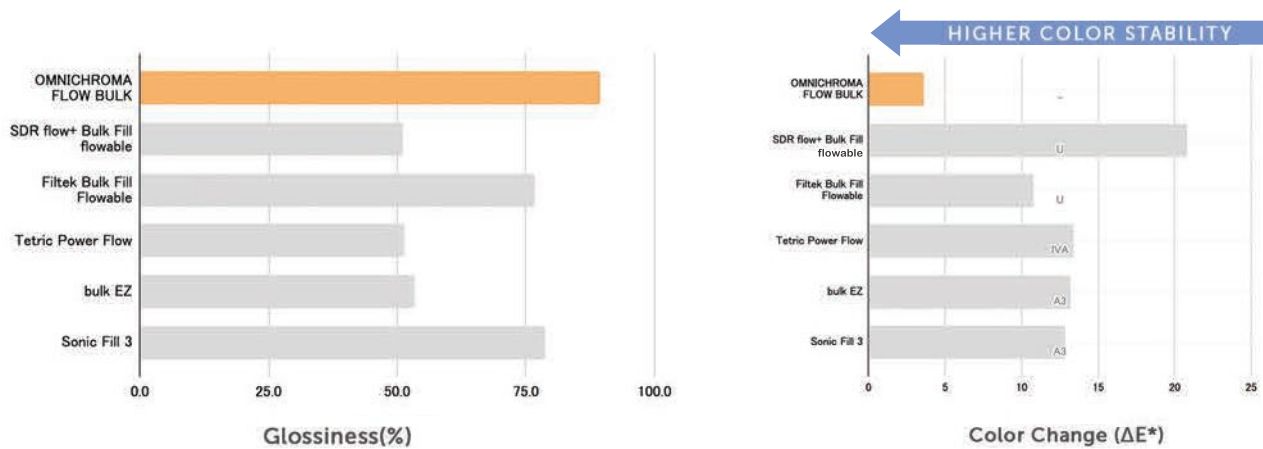
Cavity Adaptation

OMNICHROMA Flow BULK has low viscosity—it uniformly adapts to cavity walls. Adapting and covering margins ensures less risk of secondary caries.



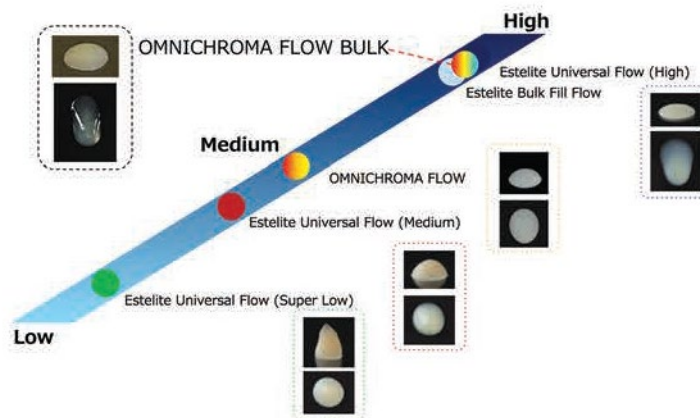
High Polishability and Stain Resistance

OMNICHROMA Flow BULK produces extremely high glossiness compared to other bulk-fill composites. The extent of staining OMNICHROMA Flow BULK displayed after being immersed into a coffee solution for 48 hours was the lowest among commercially available bulk-fill composites.



Viscosity

OMNICHROMA Flow BULK is a low viscosity, high flow Bulk Fill resin.



One-Shade OMNICHROMA Flowable Products



OMNICHROMA Flow BULK
(3g syringe)
Product number: 10221



OMNICHROMA Flow Syringe
(3g syringe)
Product number: 10220



OMNICHROMA BLOCKER Flow
(3g syringe)
Product number: 10222